

ROPER AVENUE

- Unit 101 – 1,011sf – 2 bed/2bath
- Unit 102 – 1,046sf – 2 bed/2bath
- Unit 103 – 1,126sf – 2 bed/2bath
- Unit 104 – 1,385sf – 3 bed/3 bath
- Unit 105 – 1,033sf – 2 bed/2 bath
- Unit 106 – 1,178sf – 2 bed/2 bath

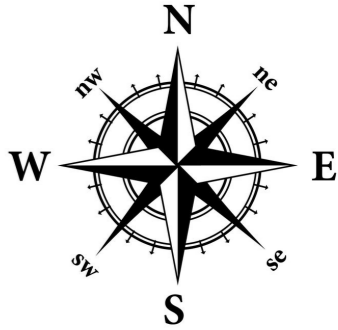
- In suite laundry
- In suite storage
- One U/G parking stall/suite (#104 has 2 stalls)
- Additional parking available for rent
- Additional storage available for rent
- Hydro, cable, internet, telephone not included



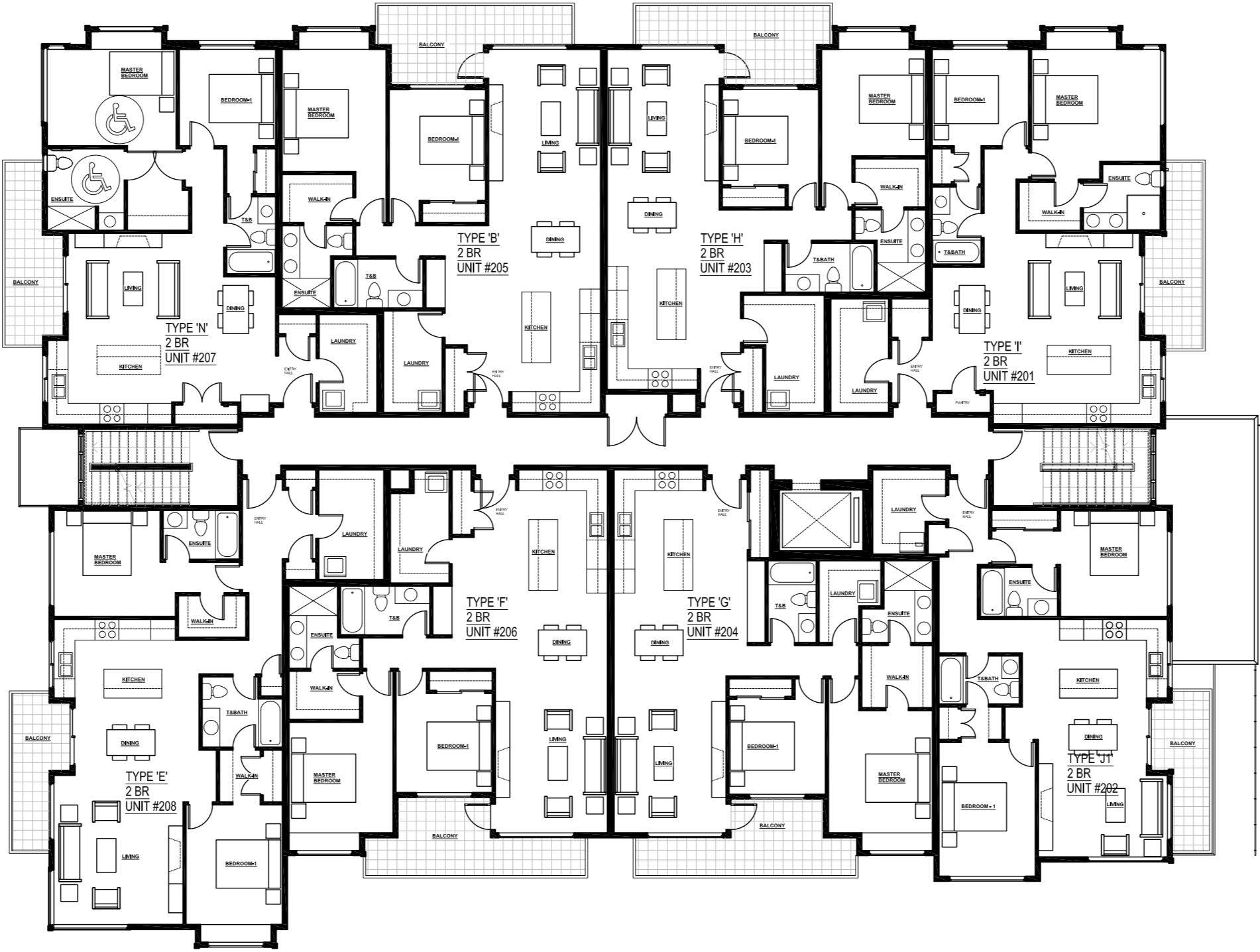
BEST STREET

FIRST FLOOR - 1293 BEST STREET, WHITE ROCK, BC

ROPER AVENUE

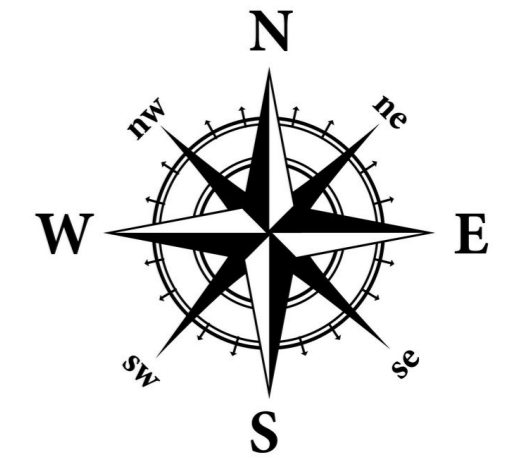


- Second Floor - all 2 bed/2 baths
- Unit 201 - 1,046sf - (corner, N/NE)
- Unit 202 - 960sf - (corner, S/SE)
- Unit 203 - 1,087sf - (north)
- Unit 204 - 1,079sf - (south)
- Unit 205 - 1,126sf - (north)
- Unit 206 - 1,105sf - (south)
- Unit 207 - 1,033sf - (corner, N/NW)
- Unit 208 - 1,178sf - (corner, S/SW)



BEST STREET

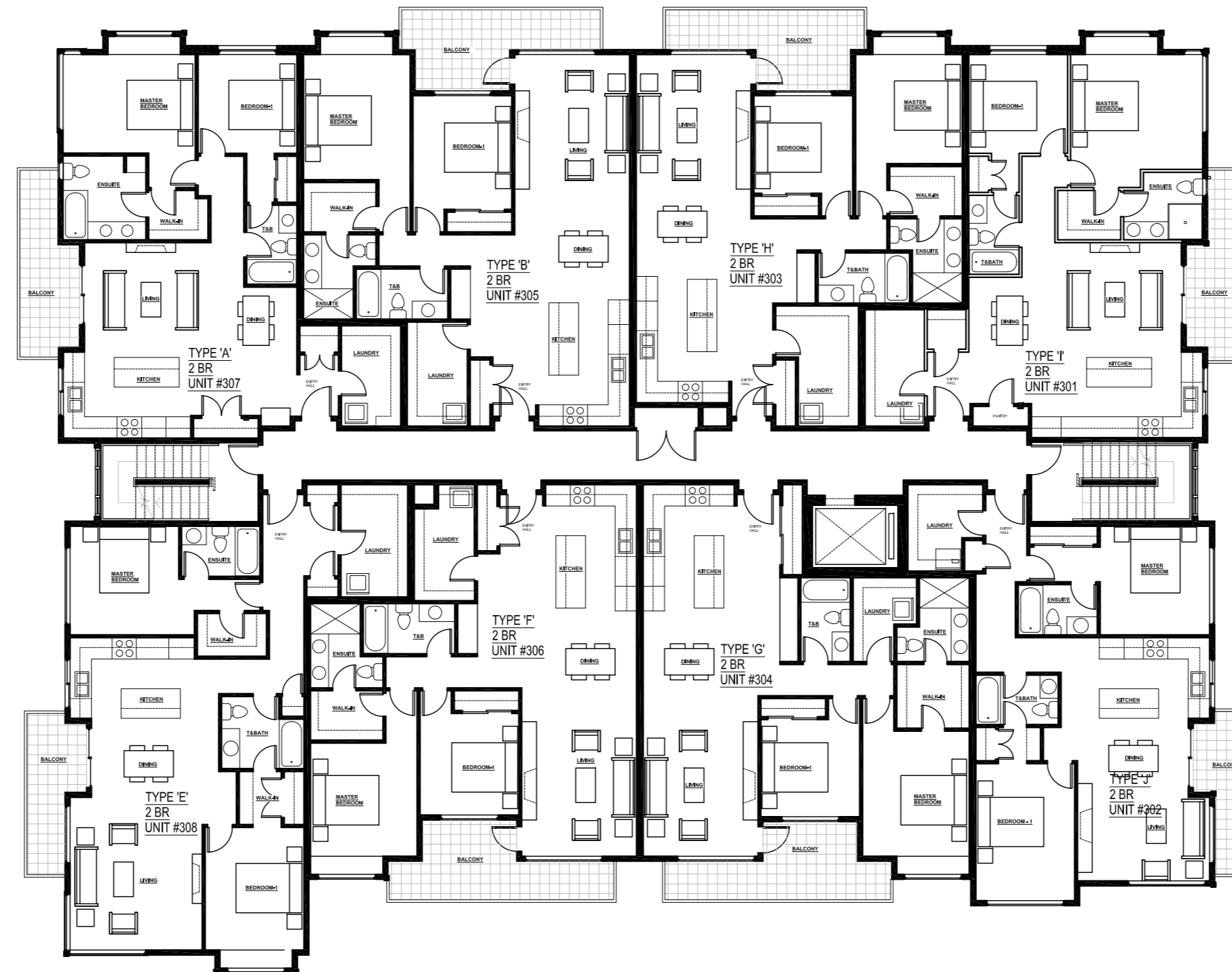
SECOND FLOOR - 1293 BEST STREET, WHITE ROCK, BC



ROPER AVENUE

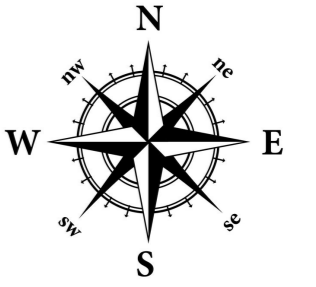
Third Floor - all 2 bed/2 baths

- Unit 301 - 1,046sf (corner N/NE)
- Unit 302 - 960sf (corner, S/SE)
- Unit 303 - 1,087sf (north)
- Unit 304 - 1,079sf (south)
- Unit 305 - 1,126sf (north)
- Unit 306 - 1,105sf (south)
- Unit 307 - 1,033sf (corner, N/NW)
- Unit 308 - 1,178sf (corner, S/SW)



BEST STREET

THIRD FLOOR - 1293 BEST STREET, WHITE ROCK, BC



ROPER AVENUE

- Unit 401 - 1,634sf - 3 bed/3 bath (corner, N/NE, patio)
- Unit 402 - 1,616sf - 3 bed/3 bath (corner, S/SE, patio)
- Unit 403 - 1,126sf - 2 bed/2 bath (north)
- Unit 404 - 1,105sf - 2 bed/2 bath (south)
- Unit 405 - 1,033sf - 2 bed/2 bath (corner, N/NW)
- Unit 406 - 1,178sf - 2 bed/2 bath (corner, S/SW)



BEST STREET

FOURTH FLOOR - 1293 BEST STREET, WHITE ROCK, BC